



AC-MINI-16

16 BAY CONFIGURABLE CHARGING CABINET USER MANUAL

The AC-MINI-16 is designed to charge and store upto 16 Laptops, Chromebooks or tablets.

Specifications:

Model		AC-MINI-16
Cabine Dimensions	Inch	16.25 (H) x 30.25 (W) x 17.75 (D)
	mm	413 (H) x 768 (W) x 451 (D)
Shelf Dimensions	Inch	14.375 (D) x 10.875 (H) & Divider Spacing: 1.25
	mm	365 (D) x 276 (H) & Divider Spacing: 28
Product Weight (Without Devices)		71 lbs (32.2 kg)
Shipping Weight		74 lbs (33.5 kg)
Capacity		16 Bays (1 Cell, 16 bays)
Supported Devices		Devices up to 15.6 inch (396.2 mm)
Power Specifications (For carts sold within North America)		AC IN/ Power Strip: 110V AC, 50/60Hz, 10A Maximum power: 1400W
Power Specifications (For carts sold outside North America)		AC IN/ Power Strip: 100-240V AC, 50/60Hz, 10A Maximum power: 2400W
Charging Type		Basic Charger
Security		Keyed lock Front door
Mounting Type		Wall mount or top of a Desk
Work Platform Loading		55.1 lbs (25 kg)
Adapter Shelves Loading (ea.)		6.6 lbs (3 kg)
Working Temperature		0° - 30°c
Working RH%		10% - 90%
Storage Temperature		-40° - 60°C Temp
Storage RH%		5% - 95%
Warranty		Lifetime Frame, 2 Years Components, 2 Year Electronics

Specifications subject to change without notice.

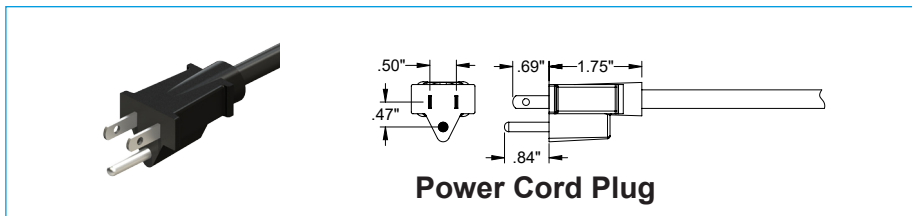
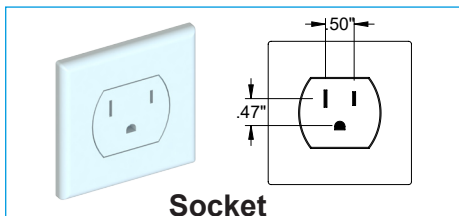
This manual covers the following models and part numbers.
The manual is based upon the North American 110V product offering.
Refer to the part numbers below and cord end diagrams for your specific region.

MODEL# AC-MINI-16

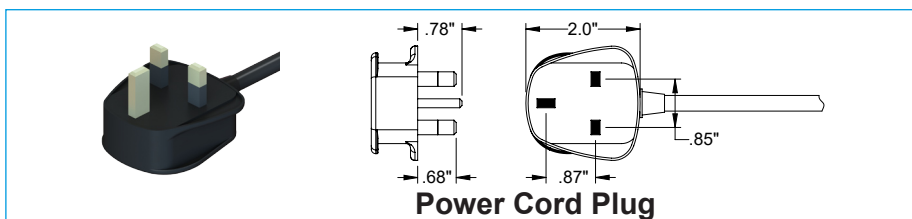
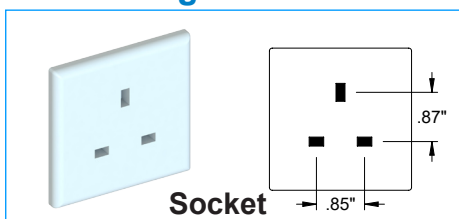
SKU	DESCRIPTION
AC-MINI-16	AC-MINI-16, 16 Bay Full-Featured Charging Cabinet - 110V NA (Legacy Number)
CAB-MIN-B16K-D	AC-MINI-16, 16 Bay Full-Featured Charging Cabinet - 110V NA
CAB-MINI-B16K-E	AC-MINI-16, 16 Bay Full-Featured Charging Cabinet - 220V EU
CAB-MINI-B16K-U	AC-MINI-16, 16 Bay Full-Featured Charging Cabinet - 220V UK
CAB-MINI-B16K-A	AC-MINI-16, 16 Bay Full-Featured Charging Cabinet - 220V AU
CAB-MINI-B16K-S	AC-MINI-16, 16 Bay Full-Featured Charging Cabinet - 220V SW

Power Cords and Sockets for Specific Region:

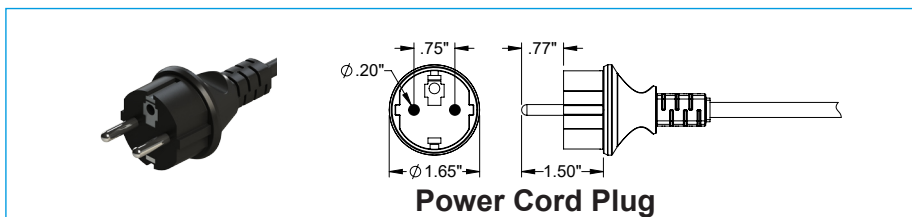
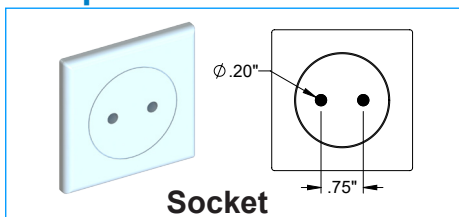
US / Canada



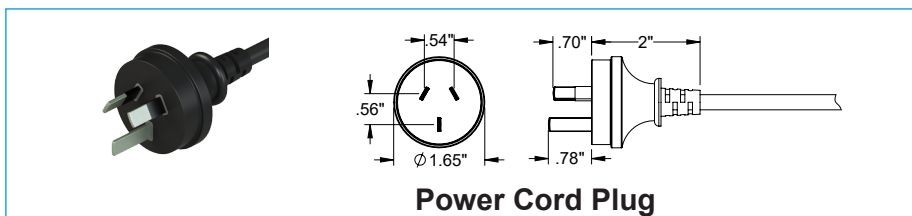
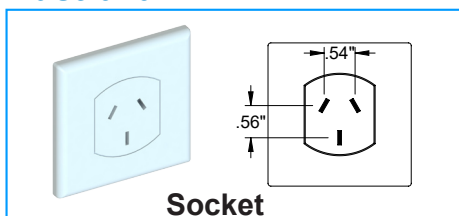
United Kingdom



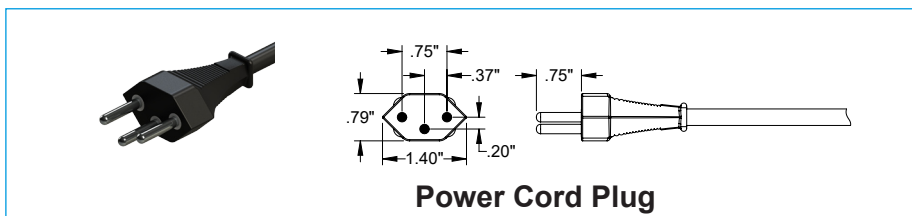
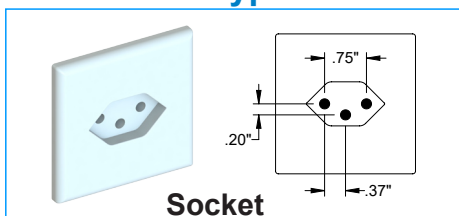
European



Australian

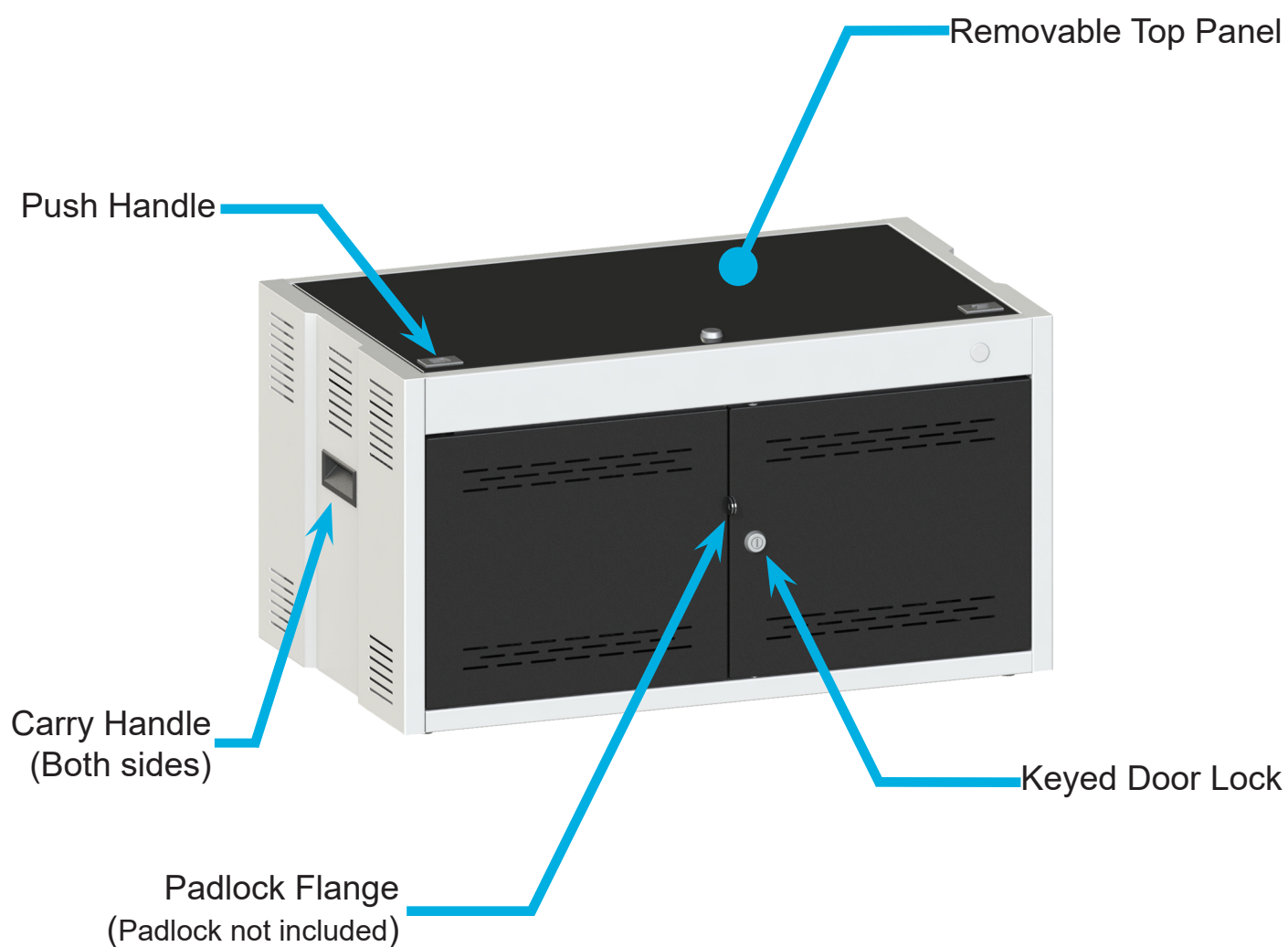


Switzerland Type-J



The AC-MINI-16 is designed to charge and store up to 16 Chromebooks or tablets.

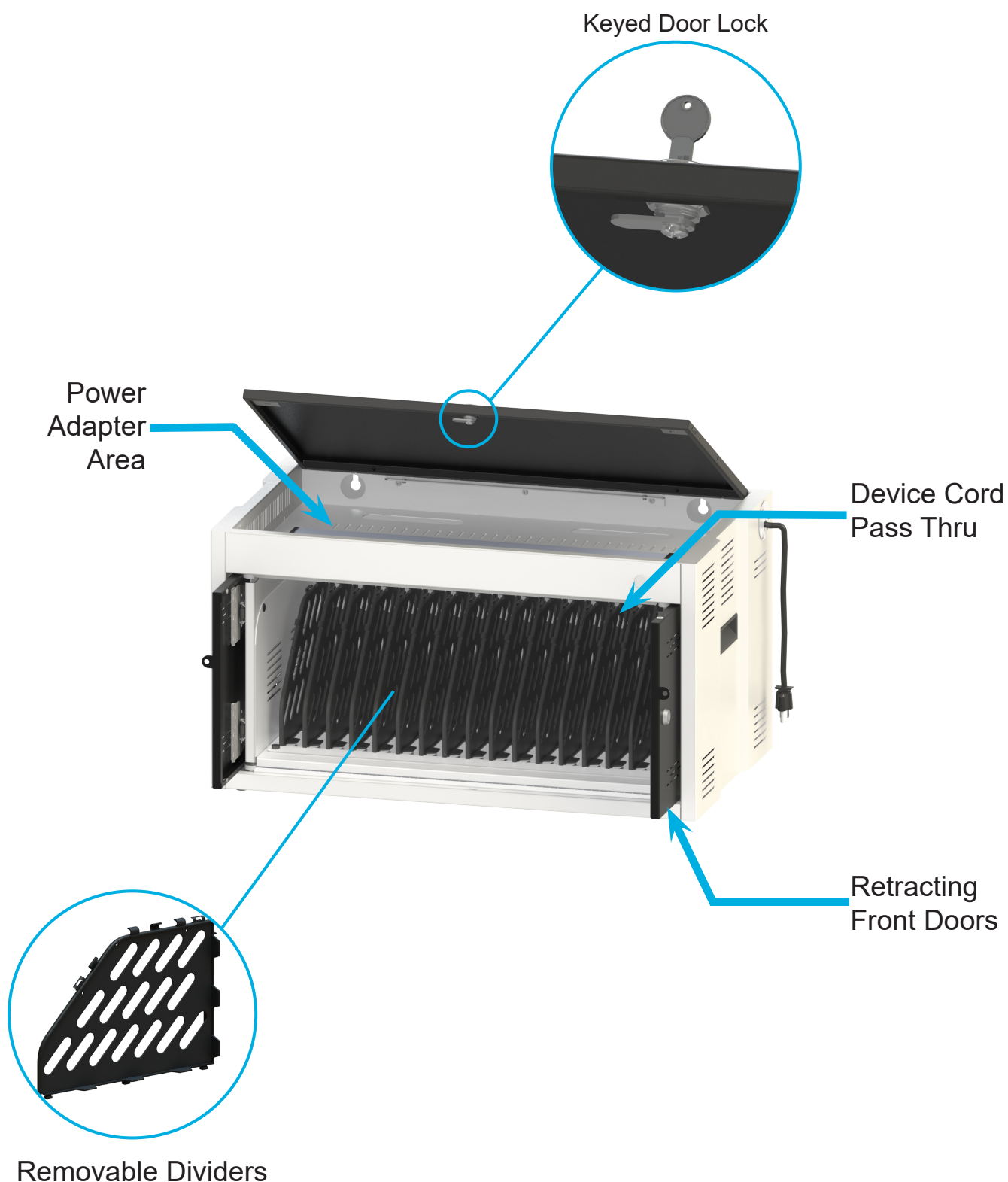
NOTE: Please review this guide before installing devices and to learn how to safely use your cart.



Front View of Cabinet

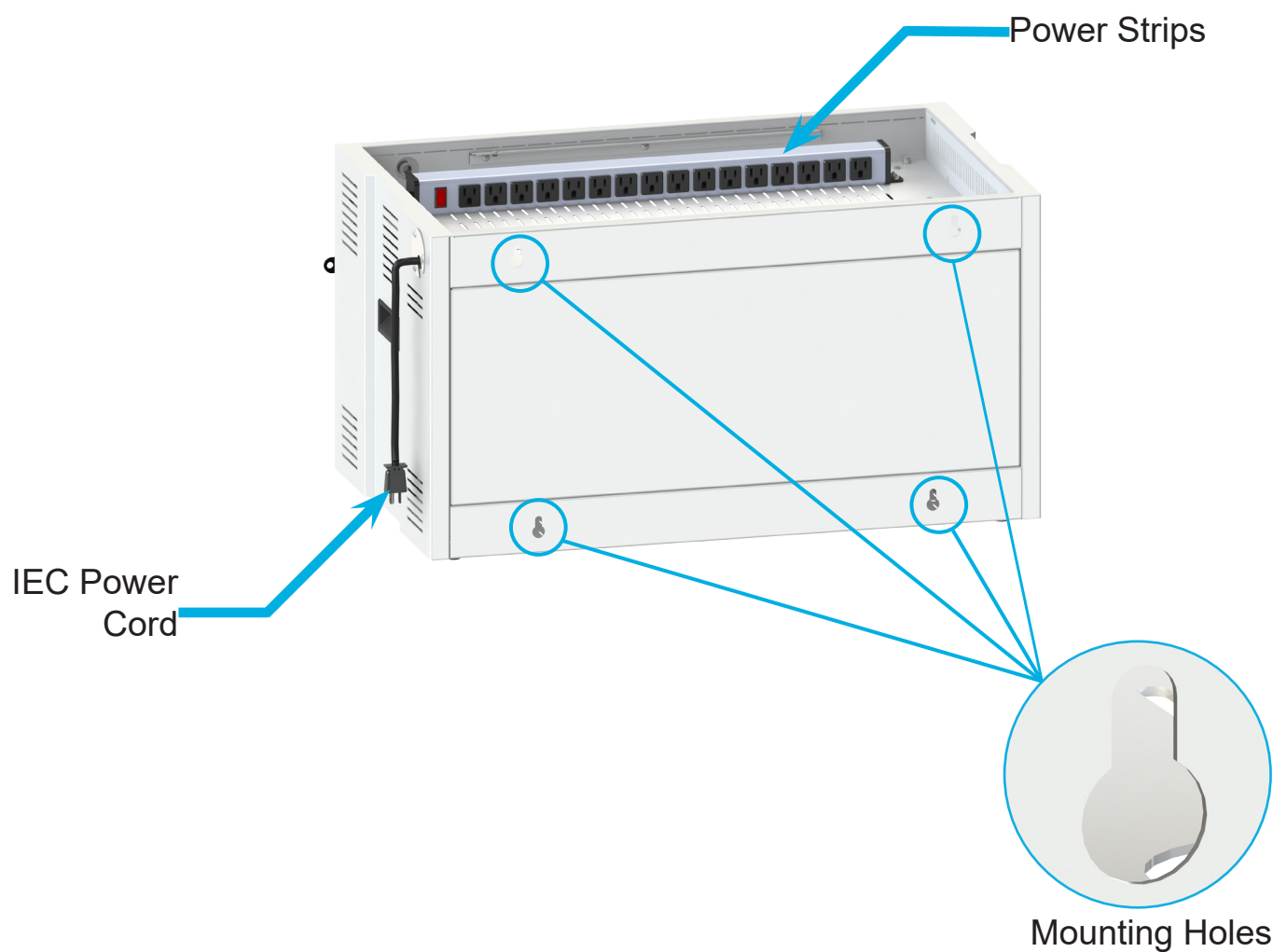
Product Information

- If the device (Tablets/ Chromebook) thickness is more than the gap between the dividers, remove one of the dividers to create enough space for your device.



Front View Of Cabinet
(Front & Top Door Open)

- Top area is used to hold the device accessories, power adapter and allow power cables.



Rear View of Cabinet

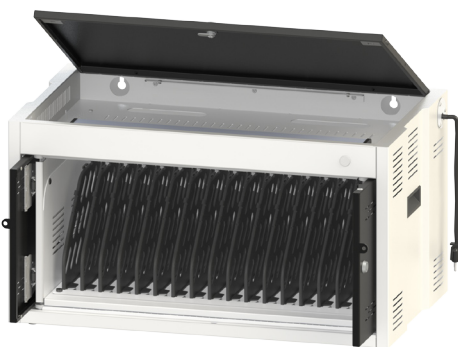
Mounting To A Wall

- The AC-MINI-16 is designed to be either placed on top of a desk or anchored to a wall and must be installed by a qualified technician. Before mounting, use a level and measure the mounting holes. Use appropriate fasteners (not included) to secure to the wall.

Warning:

The supporting surface must be able to safely support the combined load of the equipment and all attached hardware and components. Falling objects may cause serious injury.

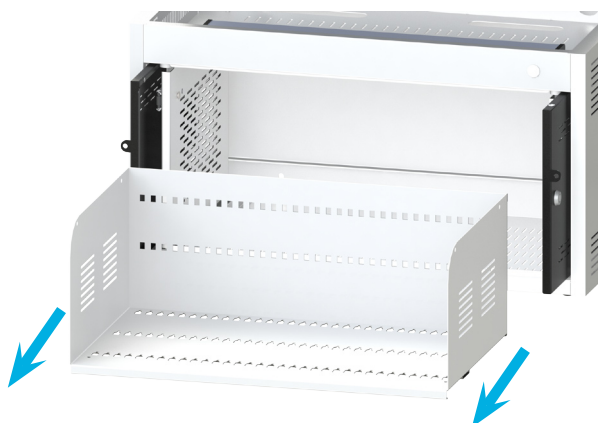
- Access top mounting holes by removing the Top Panel. Unlock, then press latches and lift upward.



- Using the top mounting holes, measure and drill into wall studs then bolt into place.



- Access bottom mounting holes by removing Device Shelf. Locate and remove the 4mm hex bolts, then slide forward and remove shelf.

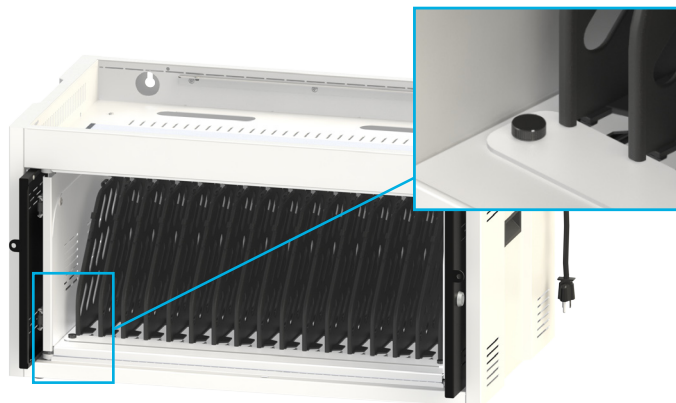


- Drill into wall studs and bolt into place, verifying it cannot be lifted or pulled off.

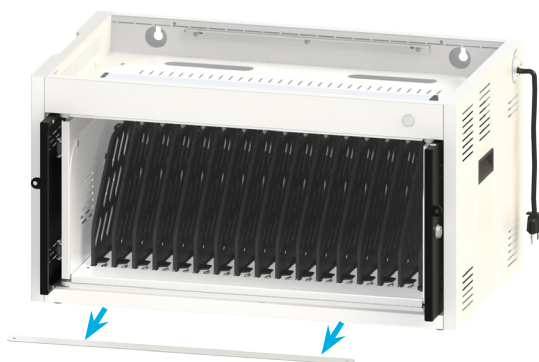
SETTING UP DEVICES (FRONT):



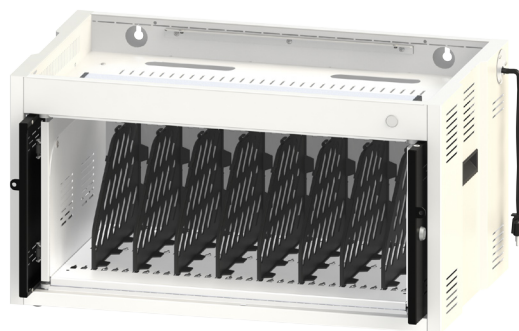
Step-1: Using a ruler, measure the thickness of your device.



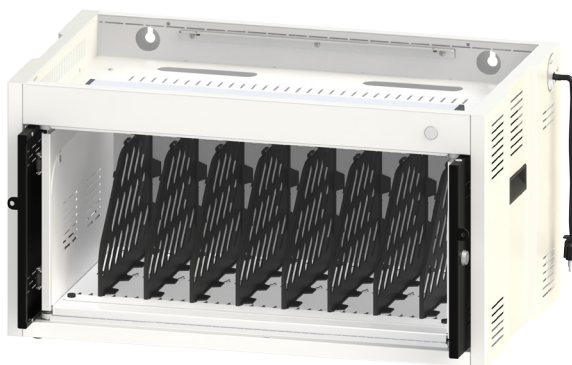
Step-2: If device is thicker than 1", locate & remove thumbscrews on shelf.



Step-3: Remove Retaining Strip.



Step-4: Pull forward, then up, to remove the Divider.



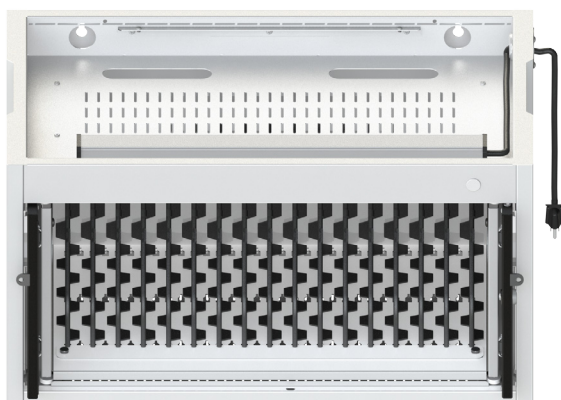
Step-5: Re-install Divider Retaining Strip & all thumbscrews.



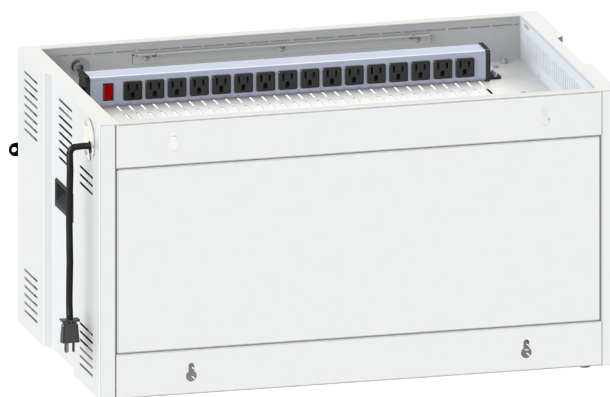
Step-1: Unlock the Top Panel Lock with the supplied Top Panel Key.



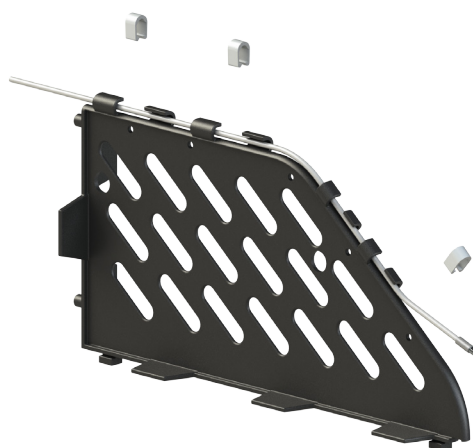
Step-2: Remove Top Panel by pressing the Latches at the same time, then lift up.



Step-3: Place device's AC adapters onto the top area and feed DC cables into the pass-thru slots.

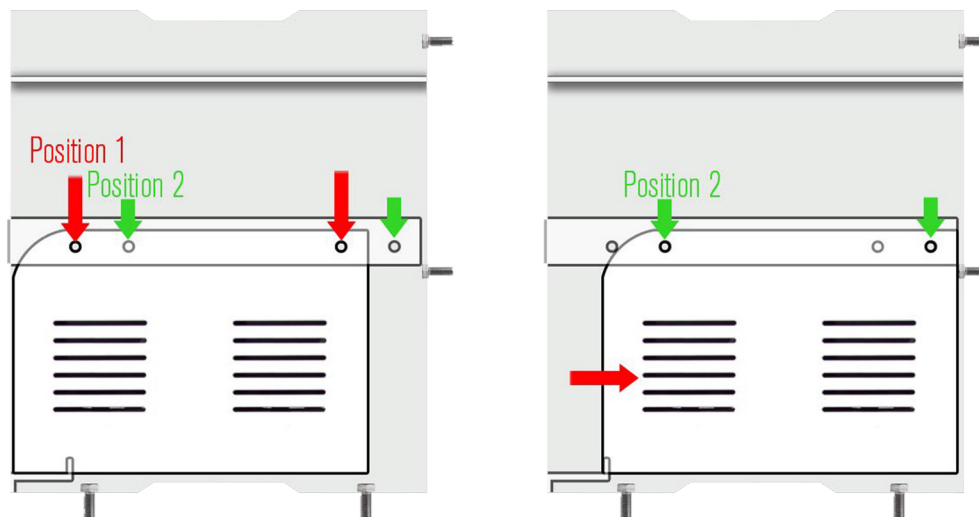


Step-4: Plug your device's AC adapters into Power Outlets.



Step-5: Open the Front Door & weave device cables into tabs, then fasten each cable to the divider by pressing down firmly on the supplied Cable Clips.

- For devices which are larger than 14" in length, configuring the AC-MINI-16 is as simple as adjusting the device shelf.
- The factory default position (Position 1), is perfect for Chromebooks, iPads, tablets and Netbooks. The optional position (Position 2), is meant for 14.5" to 15.6" Laptops.



- The AC-MINI-16 can accommodate up to a 15.6" laptop using these simple steps:
- Open up the front doors and slide them into cabinet.
- Locate and remove the 4mm hex bolts from the left and right side of the device shelf.



- Slide the shelf back until Position 2 holes are visible. Verify your device fits properly and re-install the hex bolts.

THE ELECTRICAL SYSTEM IS DESIGNED TO HANDLE A MAXIMUM OF 15 AMPS.

- If your devices use 95 watt AC Adapters or higher, you may need to reduce the total number of devices in order avoid overloading your circuit breaker. The total number of devices in order avoid overloading your circuit breaker.

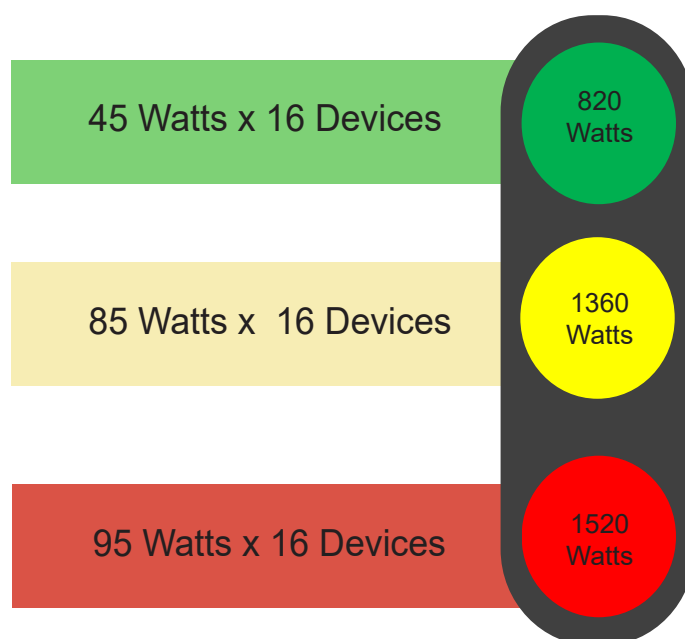


- Review your power adapter requirements:

NOTE:

If wattage exceeds 15 Amps or about 1500 Watts at one time, the charging system may not operate correctly.

Review your device's AC Adapter wattage, multiplying it by 16.



Safety Instructions

	Caution
	Notice

**THIS IS NOT A TOY.
ALWAYS FOLLOW SAFETY INSTRUCTION.**

	Danger
	Warning

DO NOT place liquids on or near the cabinet.



Important

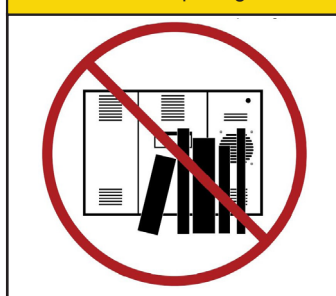
THE ELECTRICAL SYSTEM IS DESIGNED TO HANDLE A MAXIMUM OF 1500 WATTS per side. If wattage exceeds 1500W at one time, charging system may not operate correctly. Remove devices until the total wattage is under 1500W.

Don't connect the cart with broken electrical components.



- ALWAYS move the cabine slowly and be aware of our surroundings.
- Used or broken bulbs should be disposed of in accordance with all applicable disposal laws.
- Repairs should always be performed by a qualified electrician.
- Set the power switch to the OFF position before you unplug the unit from the wall, plug the unit into the wall, or plug in devices.
- Do not touch bulbs or ballasts.
- Do not alter the construction or design. Do not remove safety labels or devices.
- Do not use this product around flammable or combustible materials.

DO NOT block fan or vent opening



DO NOT use an extension cord with this unit.



For warranty claims, please have the following information ready, then visit www.powertechnologies.com to create a help ticket.

Serial Number:

Charging System Type:

Date Of Purchase:

Reseller Name:

PO Number:

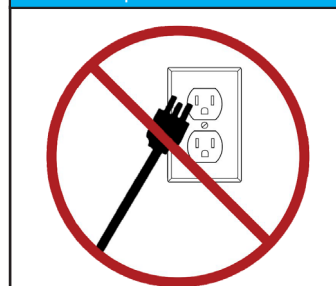
DO NOT touch any part of the electrical system while plugged in.





DO NOT allow children to move or climb.

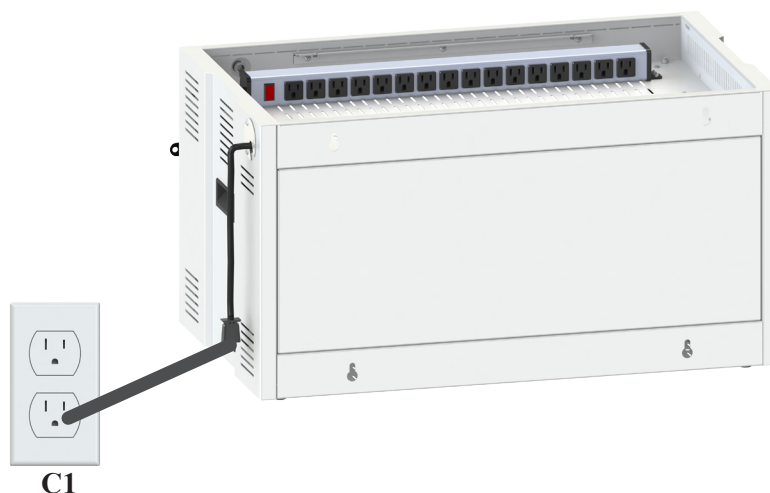


DO NOT over extend the power cord



TROUBLE	Indication	Possible Cause	How to check	Where to check	Remedy
Devices are not charged	No visible indication	Power cord failure	<ul style="list-style-type: none"> Open the top panel door and locate the 2 horizontal mounted Power Strips. Verify each switch is in the “RESET” position, not the “OFF” position. Using an extension cord, test each Power Strip by unplugging each cord from the charging system and plugging them into the extension cord. 		Replace the power cord if found faulty
Overload Circuit	Charging System not Operating correctly	Wattage exceeds 10 Amps/1400 Watts	<ul style="list-style-type: none"> Verify maximum load of all devices is under 1400 watts if plugged into the same outlet. 		Remove Devices and re-plugged in
Devices are not charging	Laptop power Input LED not Flashes	Power Cords are not connected into the sockets firmly.	<ul style="list-style-type: none"> Check the left main power cords properly connected to functional outlets. Remove power cord and plug in a PC monitor style IEC Power Cord. 	Check the C1	If one or more Power cords are damaged or no longer works, replace as needed

Plug in both Left side power cords:



For further information on this product and others, contact Power Technologies at.

Power Technologies
42035 Zevo Dr
Temecula, CA 92590+
888.650.4488

support@powertechnologies.com

www.powertechnologies.com
